



RENEW OUR SCHOOLS ENROLLMENT FORM



focus on energy[®]

Partnering with Wisconsin utilities

RENEW OUR SCHOOLS

FOCUS ON ENERGY® partnering with Resource Central and Wisconsin K-12 Energy Education Program (KEEP) is enrolling schools in the Renew Our Schools competition. Renew Our Schools is a powerful six-week energy competition that gets students and staff in schools across the nation excited about responsible energy use. Schools use real-time energy gauges to monitor electricity use and see the immediate impact of making energy-saving changes.

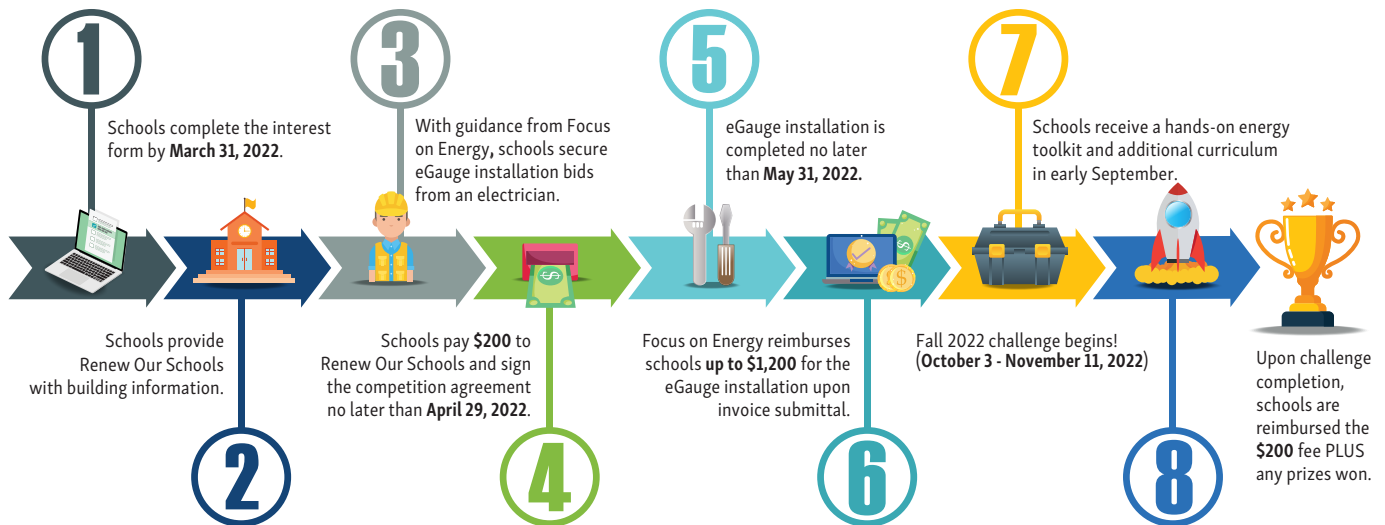
HOW DOES IT WORK?

Every school receives an eGauge, an electricity monitor that shows building energy use in real time. Schools assemble an energy team and receive a toolkit for hands-on learning. Points are earned for saving energy and completing school energy actions. Schools earning the most points are eligible for cash and prizes. The graphic below outlines the process and timeline for the fall 2022 competition.

RENEW OUR SCHOOLS
Get smart about energy use.

FALL 2022

School Energy Challenge Road Map



Learn more about the fall 2022 challenge:
focusonenergy.com/programs/k-12-schools



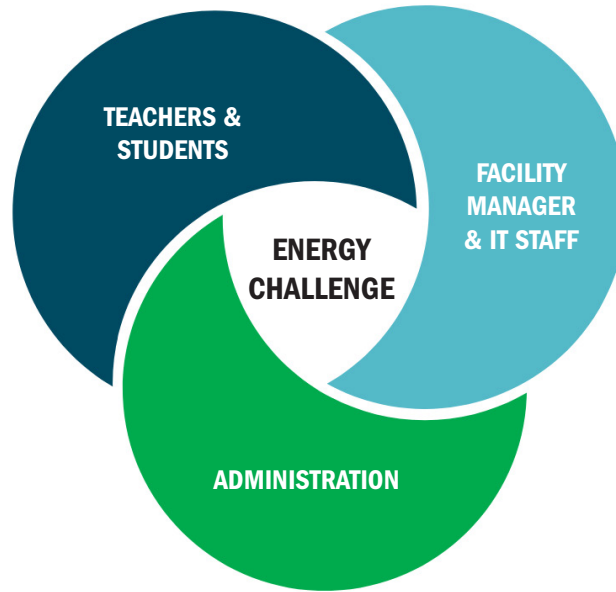
Wisconsin's K-12 Energy Education Program (KEEP)
College of Natural Resources
University of Wisconsin - Stevens Point



focus on energy®
Partnering with Wisconsin utilities

SCHOOL EXPECTATIONS

A successful school energy challenge brings the teachers and students, administrators, facility manager and IT staff together to raise energy awareness and reduce energy use at the school. It takes the support of all three groups to see a sustainable change in the school community. Schools contribute \$200 towards their enrollment which is reimbursed by Focus on Energy upon successfully completing the challenge. The responsibilities of each role are listed below.



TEACHERS & STUDENTS

- Champion school-wide energy initiatives.
- Integrate the challenge into lesson plans.
- Build awareness for energy challenge.
- Coordinate and submit school energy actions.
- Create a school energy team.

ADMINISTRATION

- Provide support and awareness of the competition.
- Complete a Memo of Understanding with Renew Our Schools.
- Support energy actions identified by the students.
- Support the creation of an energy policy.

FACILITY MANAGER/IT STAFF

- Complete a building questionnaire.
- Provide historical utility data.
- Submit electrical one-line drawings.
- Coordinate the installation of an eGauge monitor with a contracted electrician.
- Coordinate the installation of a hardwired ethernet connection.
- Verify correct installation of the eGauge with Renew Our Schools.
- Support energy actions identified by students.

PARTNER EXPECTATIONS

Participating schools have access to multiple resources to help them be successful in the challenge, including:

FOCUS ON ENERGY

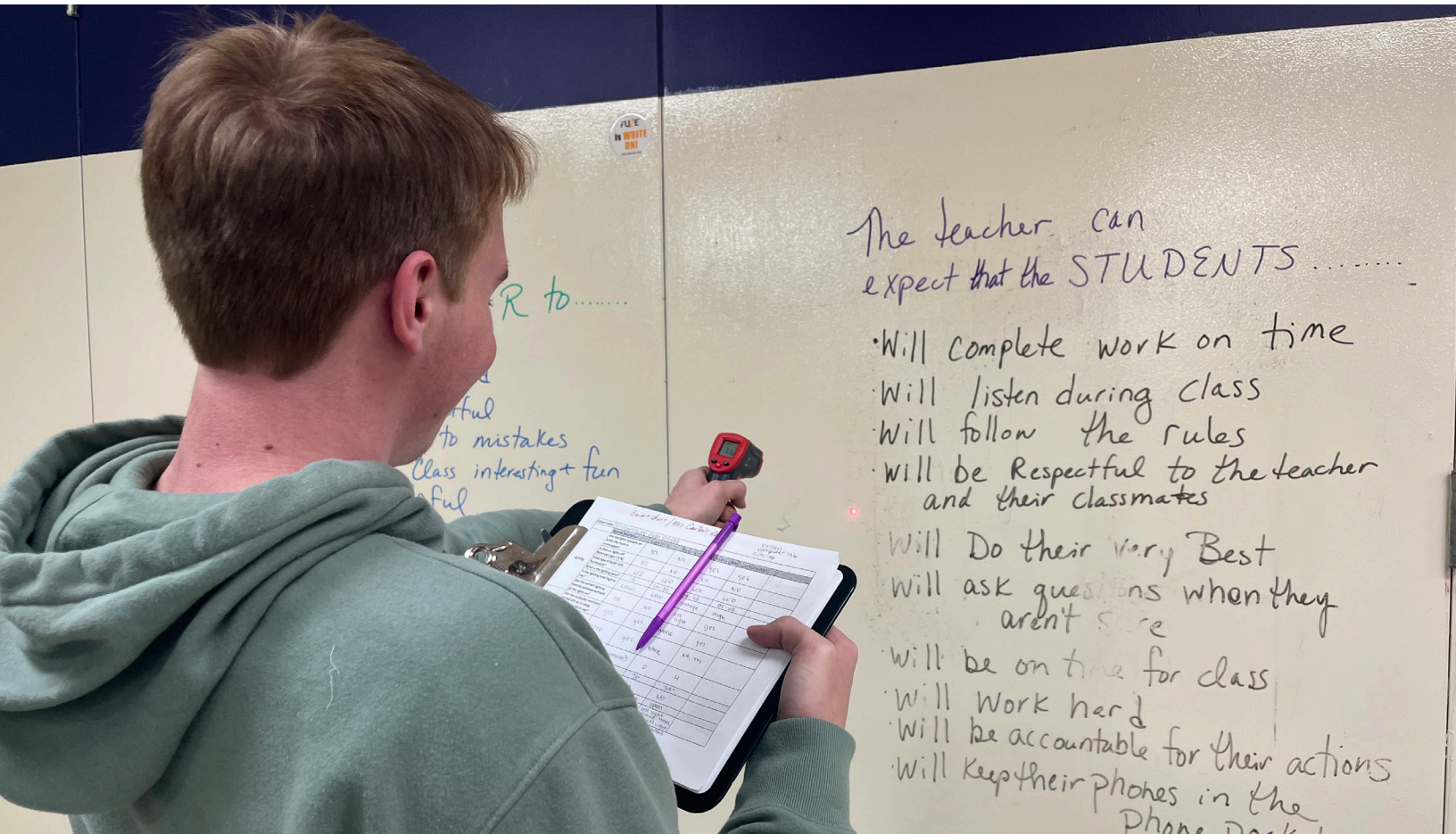
- Reimbursement of enrollment fee (\$200) upon successful completion of energy challenge.
- eGauge installation reimbursement (up to \$1,200) with a detailed invoice.
- Support with on-site school energy audits and Energy Advisor mentorship.

KEEP

- Coordination of energy action support.
- Lesson planning assistance.
- Energy audit tools and guidance.

RESOURCE CENTRAL

- Access to the Renew Our Schools challenge portal to track challenge statistics and energy savings.
- eGauge installation guidance, support, and educational background knowledge.
- Regular updates and communication about the challenge.
- Energy audit tools and curriculum.



RENEW OUR SCHOOLS ENROLLMENT FORM

ENROLL BY 3/31/2022

SECTION 1

ACCOUNT AND CUSTOMER INFORMATION

FEIN

DISTRICT

LEGAL ADDRESS (AS SHOWN ON COMPANY W-9)

CITY

STATE

ZIP

SECTION 2

PARTICIPATING SCHOOL INFORMATION

(Refer to your utility bills for account numbers below.)

SCHOOL NAME

SCHOOL ADDRESS

CITY

STATE

ZIP

ELECTRIC UTILITY AT SCHOOL

ELECTRIC ACCOUNT #

GAS UTILITY AT SCHOOL

GAS ACCOUNT #

SCHOOL NAME (IF SIGNING UP MULTIPLE SCHOOLS)

SCHOOL ADDRESS

CITY

STATE

ZIP

ELECTRIC UTILITY AT SCHOOL

ELECTRIC ACCOUNT #

GAS UTILITY AT SCHOOL

GAS ACCOUNT #

SECTION 3

PAYMENT INFORMATION

Check will be payable to Customer. Payee is responsible for any associated tax consequences.

Mail check to:

- Customer Address
- School Address(es)
- Alternate Address (complete below)

ADDRESS

CITY

STATE

ZIP

ATTENTION TO (OPTIONAL)

SIGN
HERE

SCHOOL CONTACT INFORMATION

All three sections must be completed to process enrollment.

ADMINISTRATION

NAME

TITLE

EMAIL

PHONE

SIGNATURE

DATE

FACILITY MANAGER

NAME

TITLE

EMAIL

PHONE

SIGNATURE

DATE

LEAD TEACHER

NAME

TITLE

EMAIL

PHONE

SIGNATURE

DATE

PARTICIPATION REQUIREMENTS

Before you start your project, make sure you are familiar with participation requirements, program information, and Terms and Conditions.

INFORMATION AND REQUIREMENTS

General Terms and Conditions

Review the Focus on Energy Terms and Conditions at focusonenergy.com/terms or call **888.623.2146** to request a copy.

Incentive Limits

Business Programs: Incentives are limited to \$300,000 per project and \$400,000 per customer per calendar year for all Focus on Energy incentives (prescriptive and custom).

Depending on your business tax classification, you may receive IRS form 1099 for incentives totaling more than \$600 in a calendar year.

Focus on Energy Information

Focus on Energy works with eligible Wisconsin residents and businesses to install cost-effective energy-efficiency and renewable-energy projects. Focus on Energy information, resources, and financial incentives help projects that otherwise would not get completed or to complete projects sooner than scheduled. Its efforts help Wisconsin residents and businesses manage rising energy costs, promote in-state economic development, protect our environment, and control the state's growing demand for electricity and natural gas.

For more information, call **888.623.2146**
or visit focusonenergy.com.



focus on energy[®]

Partnering with Wisconsin utilities

REDUCING ENERGY WASTE ACROSS WISCONSIN

Focus on Energy, Wisconsin utilities' statewide program for energy efficiency and renewable energy, helps eligible residents and businesses save energy and money while protecting the environment. Focus on Energy information, resources, and financial incentives help to implement energy efficiency and renewable energy projects that otherwise would not be completed.

©2022 Wisconsin Focus on Energy